



100% RECYCLABLE  
REUSABLE  
PLEASE REUSE AND RECYCLE THIS PACKAGE

# ENVIRONMENTAL POLICY FOR SUPPLIERS

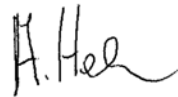
## Environmental Policy for Suppliers

# Preface

2

The goal of Scholz Promotion Service GmbH is to protect our shared environment through the responsible handling of resources necessary for our services. This goal can only be achieved if environmental aspects are considered when selecting supply scopes in the form of raw, auxiliary, and operating materials, machinery and equipment, as well as services. Our guidelines are binding for our suppliers. When subcontracting to third parties, our suppliers must also ensure that these guidelines are known to their suppliers and enforce compliance with them.

Stuttgart, 18.01.2024



Alexander Helm  
Management



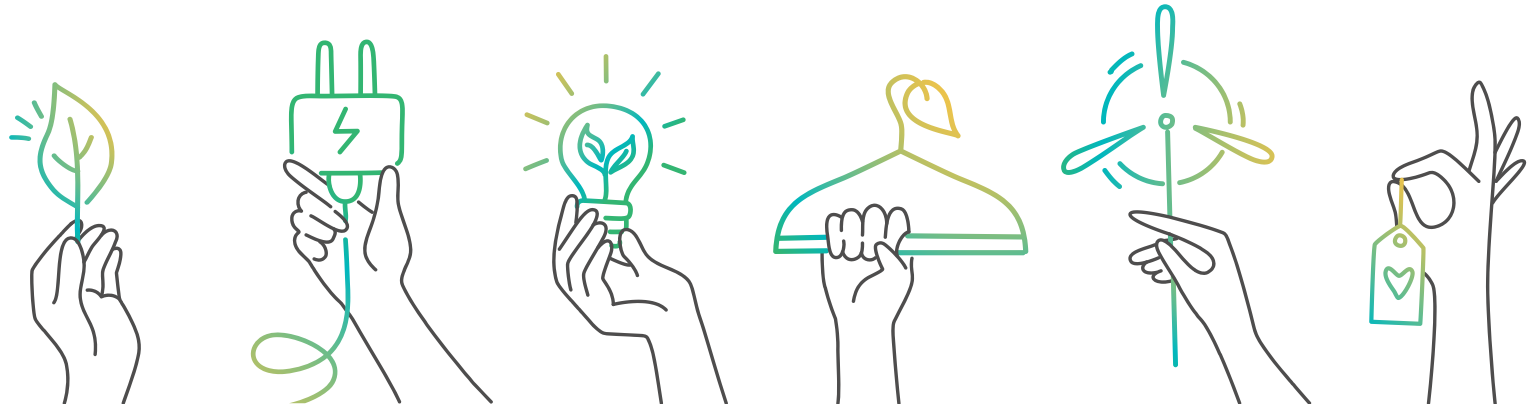
# Environmental Policy for Suppliers

## Basic Requirements

- Legal requirements for environmental protection, trade association regulations, etc., must be complied with.
- Legal substance bans must be observed.
- Persons designated as „responsible persons“ according to legal requirements must be named and supported.
- Personnel must be appropriately trained and instructed in their activities regarding environmentally relevant aspects.
- Emergency plans must be developed and regularly practiced for possible emergencies.

## Systemic Requirements

- Environmental impacts (environmental aspects) should be monitored, considering the life cycle.
- Procedures with high environmental relevance should be documented.
- To avoid waste and unnecessary packaging, reusable systems should be preferred (target for the proportion of reusable packaging).
- If the protection of goods requires disposable packaging, environmentally friendly recyclable materials must be used (target for recycling rate).
- Unavoidable waste should be utilized as much as possible. If this is not possible, it must be properly and legally disposed of.



## Operational Requirements

- The handling of hazardous substances must be clearly and effectively regulated.
- Production facilities and environmentally relevant infrastructure should be in an environmentally friendly condition.
- Resources and materials must be handled responsibly.

## Prospective Requirements

If not already implemented, the introduction and certification of an environmental and energy management system should be pursued.



### Publisher/Imprint:

**Scholz Promotion Service GmbH**

Schelmenwasenstr. 22

70567 Stuttgart

Germany

Tel.: +49 (0) 711-65658-0

Fax.: +49 (0) 711-65658-33

kontakt@scholzpromotion.de

www.scholzpromotion.de

© As of 01/2024